

Some of the Best Nectar Plants:

Red Pentas *Pentas lanceolata*

Mexican sunflower
Tithonia rotundifolia

Swamp sunflowers
Helianthus angustifolius

Bee balm *Monarda punctata*

Blue Porterweed
Stachytarpheta jamaicensis

Firebush *Hamelia patens*

Plumbago *Plumbago auriculata*

Native milkweeds

Anise hyssop *Hyssopus officinalis*

Ironweed *Veronia gigantea*

Peregrina *Jatropha integerrima*

Blue Porterweed
Stachytarpheta jamaicensis

Who We Are

The Gainesville Garden Club is a self supporting, non-profit organization dedicated to education, beautification, and conservation. Each year, members work on over 2 dozen community projects together.

Visit us Online

AT

WWW.GGCFL.ORG



Our Mission

Members of the Gainesville Garden Club are special people who appreciate the importance of friendships while they promote the beauty in nature, stimulate knowledge and love of gardening and design, aid in the protection of birds, butterflies, native plant material, and participate in civic and environmental responsibilities.



Gainesville Garden Club
PO Box 357608
Gainesville FL 32635-7608

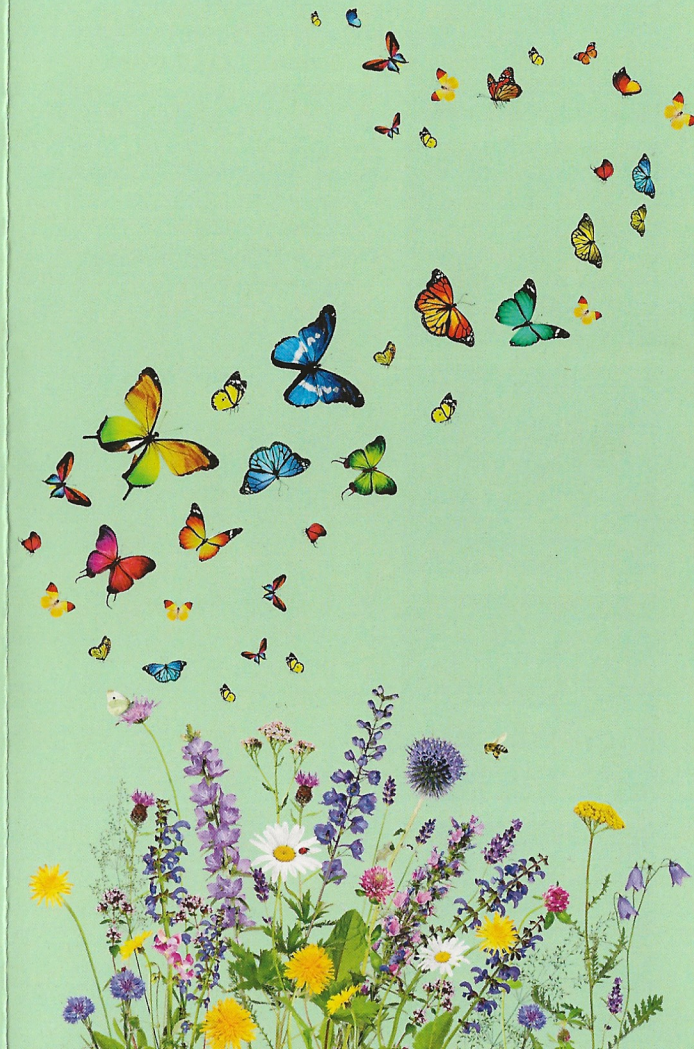
This guide was created by Garden Club Member Lois McNamara and Graphic Designer Ellen Walker at The UPS Store #2715.

BUTTERFLY & HOST PLANT

Identification Guide

PROVIDED BY THE

GAINESVILLE GARDEN CLUB





ZEBRA LONGWING

Passion Flower Vines (*also called Maypops*)
On the Arbor



GULF FRITILLARY

Passion Flower Vines (*also called Maypops*)
On the Arbor



MONARCH

Native milkweeds (*Asclepias perennis* and *Asclepias incarnata* preferred)
Tropical milkweed (*Asclepias curassavica*, Cut down in October)



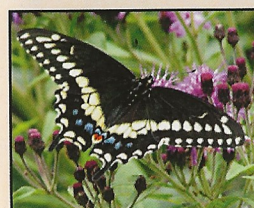
QUEEN

Native milkweeds (*Asclepias perennis* and *Asclepias incarnata* preferred)
Tropical milkweed (*Asclepias curassavica*, Cut down in October)



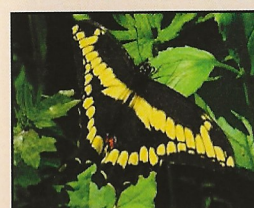
EASTERN TIGER SWALLOWTAIL

Willow Tree
Black Cherry Tree
Ash Tree



BLACK SWALLOWTAIL

Parsley
Fennel
Dill



GIANT SWALLOWTAIL

Hoptree or Hercules' Club
Wild Lime & Citrus Trees



PIPEVINE SWALLOWTAIL

Dutchman's Pipe
Other Pipevines
On the Arbor
Virginia Snakeroot



ZEBRA SWALLOWTAIL

Pawpaw Plants



POLYDAMUS SWALLOWTAIL

Dutchman's Pipe
Other Pipevines



PALAMEDES SWALLOWTAIL

Bay Trees



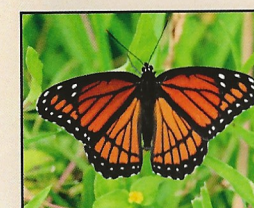
SPICEBUSH SWALLOWTAIL

Spicebush
Sassafras



BUCKEYE

Twinflower,
Various weeds and
wildflowers
Frog fruit



VICEROY

Willow trees



CLOUDLESS SULPHUR

Plants in Senna (*Cassia*)
genus



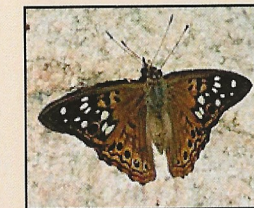
LITTLE SULPHUR

Sunshine Mimosa



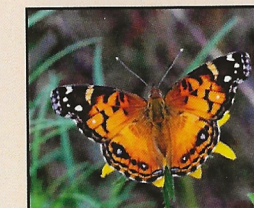
OTHER SULPHURS

Plants in the Cabbage
Family
Peppergrass
Partridge Pea



HACKBERRY EMPEROR

Sugarberry Tree



AMERICAN PAINTED
LADY

Cudweed Sweet
everlasting (Cudweed
probably on campus)



SOUTHERN DOGFACE

False Indigo
Amorpha fruticosa



TWO-SPOTTED
SKIPPER

False Indigo
Amorpha fruticosa

Species

Example

Host Plants

BUCKEYE



Twinflower,
Various weeds and
wildflowers
Frog fruit

VICEROY



Willow trees

CLOUDLESS
SULPHUR



Plants in Senna
(Cassia) genus

LITTLE
SULPHUR



Sunshine Mimosa

OTHER
SULPHURS



Plants in the Cabbage
Family
Peppergrass
Partridge Pea

HACKBERRY
EMPEROR



Sugarberry Tree

Species

Example

Host Plants

AMERICAN
PAINTED LADY



Cudweed Sweet
everlasting (Cudweed
probably on campus)

SOUTHERN
DOGFACE



False Indigo
Amorpha fruticosa

TWO-SPOTTED
SKIPPER



False Indigo
Amorpha fruticosa

Some of the Best Nectar Plants:

- Red Pentas (*Pentas lanceolata*)
- Mexican sunflower (*Tithonia rotundifolia*)
- Swamp sunflowers (*Helianthus angustifolius*)
- Bee balm (*Monarda punctata*)
- Blue Porterweed (*Stachytarpheta jamaicensis*)
- Firebush (*Hamelia patens*)
- Plumbago (*Plumbago auriculata*)
- Native milkweeds
- Anise hyssop (*Hyssopus officinalis*)
- Ironweed (*Veronia gigantea*)
- Peregrina (*Jatropha integerrima*)
- Swamp sunflowers (*Helianthus angustifolius*)
- Blue Porterweed (*Stachytarpheta jamaicensis*)

Species

Example

Host Plants

ZEBRA
LONGWING



Passion Flower Vines (also called Maypops)
On the Arbor

GULF
FRITILLARY



Passion Flower Vines (also called Maypops)
On the Arbor

MONARCH



Native milkweeds (*Asclepias perennis* and *Asclepias incarnata* preferred)
Tropical milkweed (*Asclepias curassavica*, Cut down in October)

QUEEN



Native milkweeds (*Asclepias perennis* and *Asclepias incarnata* preferred)
Tropical milkweed (*Asclepias curassavica*, Cut down in October)

EASTERN TIGER
SWALLOWTAIL



Willow Tree
Black Cherry Tree
Ash Tree

BLACK
SWALLOWTAIL



Parsley
Fennel
Dill

Species

Example

Host Plants

GIANT
SWALLOWTAIL



Hoptree or Hercules' Club
Wild Lime & Citrus Trees

PIPEVINE
SWALLOWTAIL



Dutchman's Pipe
Other Pipevines
On the Arbor
Virginia Snakeroot

ZEBRA
SWALLOWTAIL



Pawpaw Plants

POLYDAMUS
SWALLOWTAIL



Dutchman's Pipe
Other Pipevines

PALAMEDES
SWALLOWTAIL



Bay Trees

SPICEBUSH
SWALLOWTAIL



Spicebush
Sassafras

Butterflies in Our Yards



Florida-Friendly
Landscaping PROGRAM

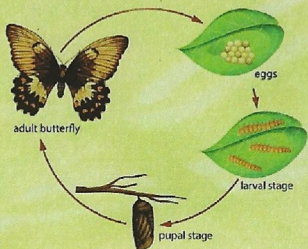
Butterflies are important for our environment. As butterflies fly around the landscape looking for food and shelter, they pollinate flowers important to agricultural production and the environment. Providing plants around our homes helps butterflies flourish.

Butterflies seek food from nectar plants and places to lay their eggs called host plants. Butterflies collect nectar from many sources but need specific host plants to lay their eggs. As an example, Monarch butterflies specifically seek milkweed (*Asclepias spp.*) plants to lay their eggs. Without host plants, butterflies cannot reproduce properly.

By planting host plants in your landscape, butterflies lay their eggs which hatch and become caterpillars (larvae). Caterpillars then pupate and form a chrysalis (pupa). A few weeks later the chrysalis breaks open and a new adult butterfly emerges and begins the cycle again.

Planting different plants around our homes to attract butterflies is very easy. We cannot expect to attract every butterfly to our yard but it is easy to attract multiple species. What butterflies would you like to see? What are their host plants? University of Florida's free publication Butterfly Gardening in Florida is available online or at your local Extension office.

In the Haile Plantation Butterfly Garden, there are ten different host plants and 16 different nectar plants that attract lots of butterflies. Which of the plants below can you find in the garden that supports butterflies?



EGG

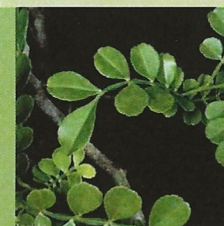
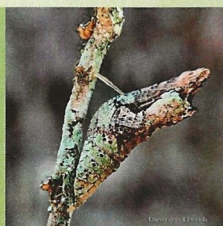
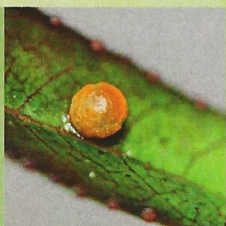
LARVAE

PUPA

ADULT

HOST PLANT

Giant Swallowtail



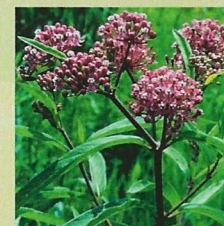
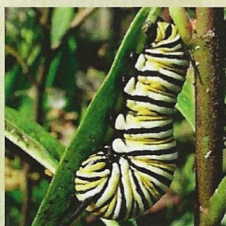
WILD LIME

Zanthoxylum fagara

USDA Zones: 9B - 11
Size (HxW): 20' x 15'
Light: Partial Shade - Full Sun
Drought Tolerance: High

The Wild Lime is a round-shaped evergreen shrub that is native to Florida. Its showy yellow flowers and black fruit attract butterflies and add great aesthetic value to the landscape.

Monarch



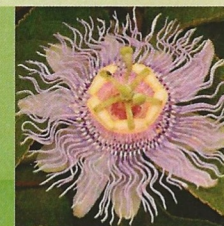
SWAMP MILKWEED

Asclepias incarnata

USDA Zones: 8 - 10
Size (HxW): 2' x 2'
Light: Full Sun
Drought Tolerance: Moderate

The Swamp Milkweed and other milkweeds are showy perennials with many being native to Florida. The showy flowers add wonderful colors to the landscape, but provide vital habitat for Monarch Butterflies.

Zebra Longwing



PASSION FLOWER

Passiflora incarnata

USDA Zones: 7B - 11
Size (HxW): Vining Plant, Needs Structure
Light: Full Sun
Drought Tolerance: High

The showy Passion Flower vine produces a gorgeous flower and serves as host for Florida's state butterfly, the Zebra Longwing. This evergreen vine needs a structure to climb, but adds wonderful color to any landscape.

